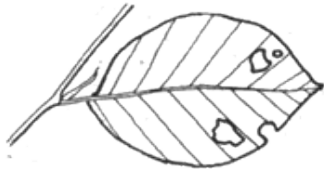


The wood in summer

Can you find these signs of summer? Look around the woodland and the yard. Touch and smell, but please don't pick! What will happen to the things you find during the following season? You could colour the pictures later.

Look in the trees for :



Beech leaves eaten by insects

(can you find the insects?)



Sweet Chestnut :

Leaves

Catkins (flowers)
(smell the flowers)



Pine :

Catkins (covered with pollen)

Young Leaves



Birch :

Catkins (full of little seeds)

Leaves



Honeysuckle

(climbs up trees)
(smell its flowers)

Look for logpiles of wood that was cut last winter

